

AlephObjects.com

3D Printers, Parts, and Plastics

+1-970-377-1111

shop@alephobjects.com

626 West 66th Street

Loveland, Colorado 80538



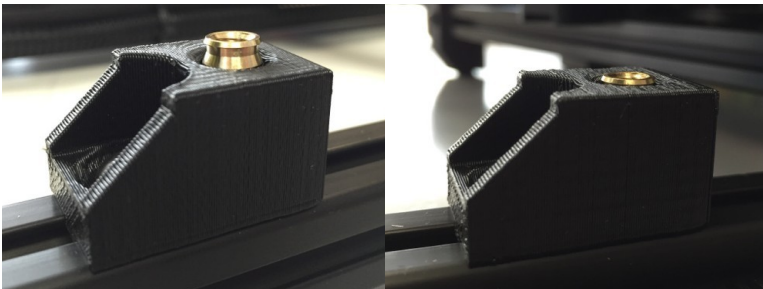
Service Bulletin

Affected product:	LulzBot TAZ 6 3D printer
Serial range:	KT-PR0041NA-15000 through KT-PR0041NA-15222
Effective date:	May 6, 2016
Service issue:	Early versions of the TAZ 6 Y-axis chassis mount threaded inserts can be pulled out of the 3D printed plastic part.

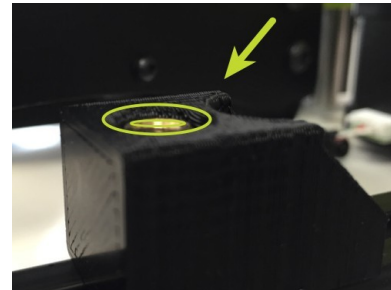
Indication:

During installation, re-installation of a Y-axis assembly, or when moving the assembled TAZ 6 3D printer it is critical to avoid placing upward pressure on the Y-axis assembly on affected units. The Bed Mount Chassis M5 threaded inserts can potentially be pulled out of the plastic chassis mounts resulting in skewed print bed.

Insert pulled out of Y-axis mounts



Perfectly seated insert



Corrective Action:

Contact the Support Team by sending an email to Support@LulzBot.com with the following information:

- Shipping and Contact information
- Order number for TAZ 6 3D printer purchase
- 3D printer serial number
- Quantity needed

Replacement Y-axis chassis mounts will be sent at no cost to you. We apologize for any inconvenience this may have caused and appreciate your business.